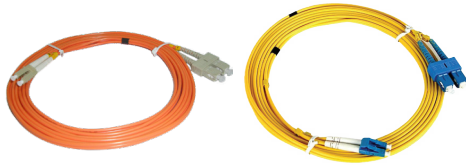


FIBER PATCH CORDS - SM SIMPLEX & DUPLEX



D-Link offers standard simplex & duplex patch cords in a variety of connectors & cables configurations. D-Link patch cords are available with full standard optical specifications, precise length tolerances. All assemblies are 100% inspected for optical characteristics and fiber end face finish. The optical fiber patch cords are suitable for data communication, telecommunication applications. The terminated connectors in assemblies are designed to and are compatible with industry standards (EIA/TIA, IEC, ANSI, NTT and Telcordia).

D-Link can deliver customized patch cords as per requirement.

KEY FEATURES

- Adopts high precision ceramic ferrule with good concentricity
- Good geometrical characteristics of apex offset, radius of curvature & fiber height
- Compact & strong crimping offers exceptional tensile strength in cable assemblies
- 100% inspected for optical characteristics & fiber end-face finish
- Low insertion loss & return loss, clean and scratch-free end faces
- Good performance endurance under changing circumstances
- Strengthen Member-Polyester/Aramid Yarns

CONNECTOR TYPE	SC/ ST/ FC/ LC/ MTRJ		
OPTICAL FIBER	SINGLE-MODE G652D, G657A, G657B		
CABLE TYPE	PVC & LSZH ON REQUEST 0.9MM/ 2.0MM/ 3.0MM SIMPLEX & DUPLEX		
CABLE COLOUR, LENGTH	YELLOW FOR SINGLE-MODE 1 M, 2M & 3M. OTHER LENGTHS ON REQUEST.		
OPTICAL SPECIFICATION	INSERTION LOSS	TYPICAL: ≤ 0.2DB, MAX. 0.3DB (MTRJ: MAX. 0.5DB)	
	RETURN LOSS	PC ≥ 45DB, UPC ≥ 50 DB, APC ≥ 60DB	
MECHANICAL SPECIFICATION	CONNECTOR FERRULE	CERAMIC, (MTRJ: PS- POLYPHENYLENE SULPHIDE)	
	APEX OFFSET	< 50UM	
	FIBER HEIGHT	± 100NM	
	END-FACE RADIUS OF CURVATURE	7MM < R < 25MM (EXCLUDING MTRJ)	
	REPEATABILITY	≤ 0.2DB 1,000 TIMES MATING CYCLES	
WORKING TEMPERATURE	-40°C ~ + 85°C		
STORAGE TEMPERATURE	-40°C ~ + 85°C		